

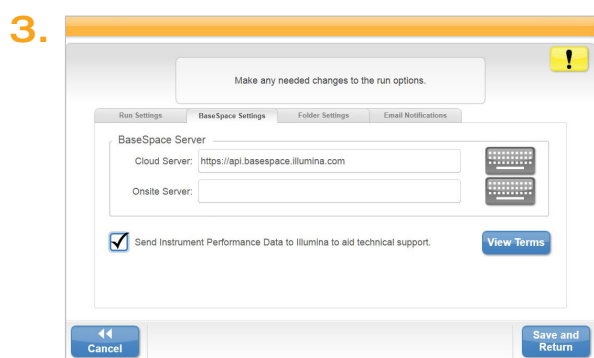
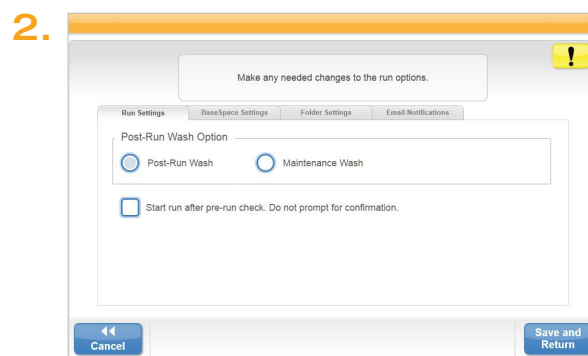
Illumina Proactive Service connectivity guide

Easily connect your MiSeq™ Sequencing System

To reduce unplanned downtime, minimize run failures and lost samples, plus resolve issues faster if and when they arise, simply follow the steps below.

Follow these steps to get connected

- From the Home screen, select **Run Options**
- Select **Send instrument performance data to Illumina** from the Run Settings tab
 - Note: in some MCS versions, this option might be located under the **BaseSpace™ Settings** tab
- Click the **Save and Return** button



For more information, contact your local field applications scientist or field service engineer.

www.illumina.com

For Research Use Only. Not for use in diagnostic procedures.