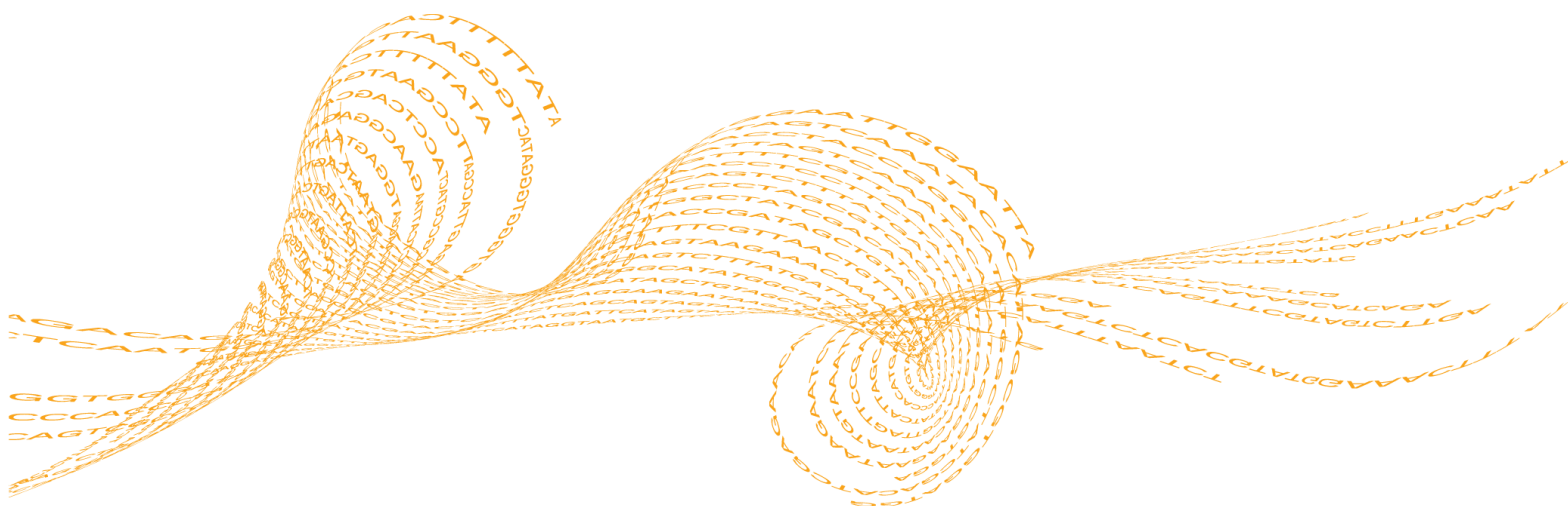


EcoStudy Software

Installation Instructions

FOR RESEARCH USE ONLY

Introduction	3
Downloading the EcoStudy Software	4
Installing the EcoStudy Software	5
Technical Assistance	



This document and its contents are proprietary to Illumina, Inc. and its affiliates ("Illumina"), and are intended solely for the contractual use of its customer in connection with the use of the product(s) described herein and for no other purpose. This document and its contents shall not be used or distributed for any other purpose and/or otherwise communicated, disclosed, or reproduced in any way whatsoever without the prior written consent of Illumina. Illumina does not convey any license under its patent, trademark, copyright, or common-law rights nor similar rights of any third parties by this document.

The instructions in this document must be strictly and explicitly followed by qualified and properly trained personnel in order to ensure the proper and safe use of the product(s) described herein. All of the contents of this document must be fully read and understood prior to using such product(s).

FAILURE TO COMPLETELY READ AND EXPLICITLY FOLLOW ALL OF THE INSTRUCTIONS CONTAINED HEREIN MAY RESULT IN DAMAGE TO THE PRODUCT(S), INJURY TO PERSONS, INCLUDING TO USERS OR OTHERS, AND DAMAGE TO OTHER PROPERTY.

ILLUMINA DOES NOT ASSUME ANY LIABILITY ARISING OUT OF THE IMPROPER USE OF THE PRODUCT(S) DESCRIBED HEREIN (INCLUDING PARTS THEREOF OR SOFTWARE) OR ANY USE OF SUCH PRODUCT(S) OUTSIDE THE SCOPE OF THE EXPRESS WRITTEN LICENSES OR PERMISSIONS GRANTED BY ILLUMINA IN CONNECTION WITH CUSTOMER'S ACQUISITION OF SUCH PRODUCT(S).

FOR RESEARCH USE ONLY

© 2012 Illumina, Inc. All rights reserved.

Illumina, illuminaDx, BaseSpace, BeadArray, BeadXpress, cBot, CSPro, DASL, DesignStudio, Eco, GAllx, Genetic Energy, Genome Analyzer, GenomeStudio, GoldenGate, HiScan, HiSeq, Infinium, iSelect, MiSeq, Nextera, Sentrix, SeqMonitor, Solexa, TruSeq, VeraCode, the pumpkin orange color, and the Genetic Energy streaming bases design are trademarks or registered trademarks of Illumina, Inc. All other brands and names contained herein are the property of their respective owners.

Introduction

This document provides instructions on downloading the installer for the latest EcoStudy software and installing it on any computer running Windows 7 or Windows XP, including the netbook provided with your Eco system.

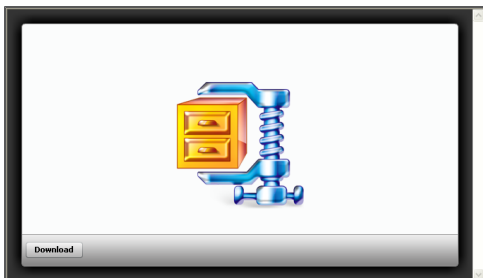


NOTE

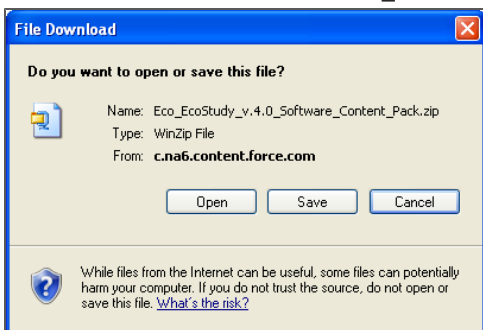
The computer where you install the EcoStudy software must have the Full version of the .NET Framework 4.0 software installed *before beginning the EcoStudy installation*. If the Full version of the .NET Framework 4.0 software is not already installed, download and install the software now using the dotNetFx40_Full_setup.exe file.

Downloading the EcoStudy Software

- 1 Follow the "Eco_EcoStudy_v.4.0_Download" link in the email you received from Illumina or found on the Software tab for the Eco Real-Time PCR System on the Illumina web site (<http://www.illumina.com/systems/ecoqpcr.ilmn>).
- 2 When you arrive at the landing page where the software installer is located, click the **Download** button in the lower left corner of the screen.



- 3 Click **Save** to download the Eco_EcoStudy_v.4.0_Software_Content_Pack.zip file.



- 4 Move the Eco_EcoStudy_v.4.0_Software_Content_Pack.zip file to your desired location.



TIP

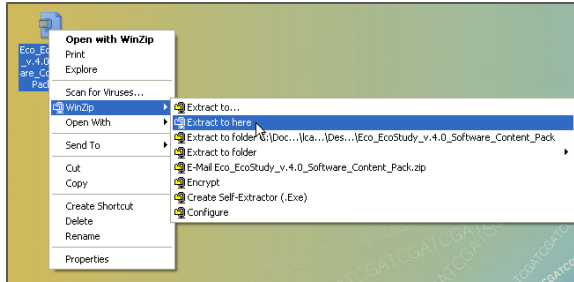
To install the EcoStudy software on a different computer than this one, move the Eco_EcoStudy_v.4.0_Software_Content_Pack.zip folder onto a USB drive.

Installing the EcoStudy Software

Before starting your software installation, close all open software applications on the computer.

Steps to Install your EcoStudy Software

- 1 Right-click the Eco_EcoStudy_v.4.0_Software_Content_Pack.zip file and select **WinZip | Extract to here.**



- 2 Open the Eco_EcoStudy_v.4.0_Software_Content_Pack\EcoStudy_v.4.0 subfolder.
- 3 If the Full version of the .NET Framework 4.0 software is not installed, double-click dotNetFx40_Full_setup.exe to install it now.
- 4 Double-click **EcoStudy.msi**.
- 5 Follow the prompts in the software installation wizard to install the EcoStudy software onto the computer.
- 6 When the installation is complete, double-click the EcoStudy desktop icon to open the EcoStudy Software.



Notes

Technical Assistance

For technical assistance, go to <http://www.illumina.com/qpcr>.

MSDSs

Material safety data sheets (MSDSs) are available on the Illumina website at <http://www.illumina.com/msds>.

Product Documentation

If you require additional product documentation, you can obtain PDFs from the Illumina website. Go to <http://www.illumina.com/support/documentation.ilmn>.

When you click on a link, you will be asked to log in to My Illumina. After you log in, you can view or save the PDF. To register for a My Illumina account, please visit <https://my.illumina.com/Account/Register>.

Illumina

Headquartered in San Diego, California, U.S.A.

+1.800.809.ILMN (4566)

+1.858.202.4566 (outside North America)

techsupport@illumina.com

www.illumina.com