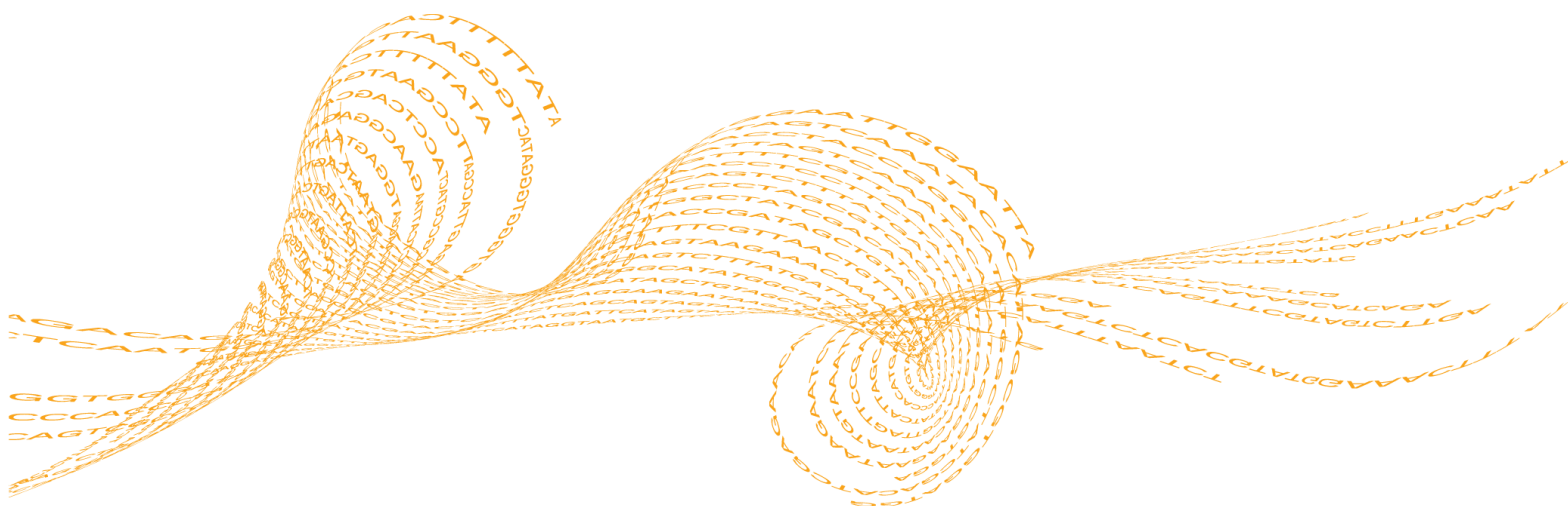


Eco Software v4.0

Upgrade Instructions

FOR RESEARCH USE ONLY

Introduction	3
Downloading the Eco Software	4
Upgrading the Eco Software	5
Upgrading Your Templates to be v4.0 Compatible	9
Technical Assistance	



This document and its contents are proprietary to Illumina, Inc. and its affiliates ("Illumina"), and are intended solely for the contractual use of its customer in connection with the use of the product(s) described herein and for no other purpose. This document and its contents shall not be used or distributed for any other purpose and/or otherwise communicated, disclosed, or reproduced in any way whatsoever without the prior written consent of Illumina. Illumina does not convey any license under its patent, trademark, copyright, or common-law rights nor similar rights of any third parties by this document.

The instructions in this document must be strictly and explicitly followed by qualified and properly trained personnel in order to ensure the proper and safe use of the product(s) described herein. All of the contents of this document must be fully read and understood prior to using such product(s).

FAILURE TO COMPLETELY READ AND EXPLICITLY FOLLOW ALL OF THE INSTRUCTIONS CONTAINED HEREIN MAY RESULT IN DAMAGE TO THE PRODUCT(S), INJURY TO PERSONS, INCLUDING TO USERS OR OTHERS, AND DAMAGE TO OTHER PROPERTY.

ILLUMINA DOES NOT ASSUME ANY LIABILITY ARISING OUT OF THE IMPROPER USE OF THE PRODUCT(S) DESCRIBED HEREIN (INCLUDING PARTS THEREOF OR SOFTWARE) OR ANY USE OF SUCH PRODUCT(S) OUTSIDE THE SCOPE OF THE EXPRESS WRITTEN LICENSES OR PERMISSIONS GRANTED BY ILLUMINA IN CONNECTION WITH CUSTOMER'S ACQUISITION OF SUCH PRODUCT(S).

FOR RESEARCH USE ONLY

© 2011-2012 Illumina, Inc. All rights reserved.

Illumina, illuminaDx, BaseSpace, BeadArray, BeadXpress, cBot, CSPro, DASL, DesignStudio, Eco, GAllx, Genetic Energy, Genome Analyzer, GenomeStudio, GoldenGate, HiScan, HiSeq, Infinium, iSelect, MiSeq, Nextera, Sentrix, SeqMonitor, Solexa, TruSeq, VeraCode, the pumpkin orange color, and the Genetic Energy streaming bases design are trademarks or registered trademarks of Illumina, Inc. All other brands and names contained herein are the property of their respective owners.

Introduction

This document provides instructions on downloading the installer for the latest Eco Software, upgrading the software on your netbook, upgrading the firmware on your Eco instrument, and upgrading any templates you have saved to be compatible with the Eco v4.0 Software.

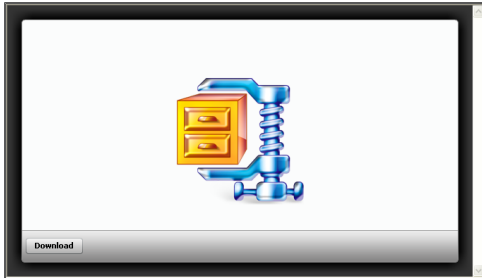


NOTE

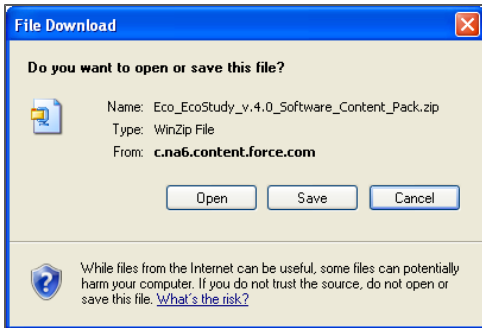
If the Full version of the .NET Framework 4.0 software is not already installed on the netbook, this installation can take up to 20 minutes. During that time, you might not see any progress on the screen; however, the installation is still running in the background. Please refrain from attempting to stop or relaunch the setup program while the installation is running; this can cause the installation to fail.

Downloading the Eco Software

- 1 Follow the “Eco_EcoStudy_v.4.0_Download” link in the email you received from Illumina or found on the Software tab for the Eco Real-Time PCR System on the Illumina web site (<http://www.illumina.com/systems/ecoqpcr.ilmn>).
- 2 When you arrive at the landing page where the software installer is located, click the **Download** button in the lower left corner of the screen.



- 3 Click **Save** to download the Eco_EcoStudy_v.4.0_Software_Content_Pack.zip file.



- 4 Move the Eco_EcoStudy_v.4.0_Software_Content_Pack.zip file to your desired location.



TIP

To install the Eco software on your netbook or other computers, move the Eco_EcoStudy_v.4.0_Software_Content_Pack.zip folder onto a USB drive.

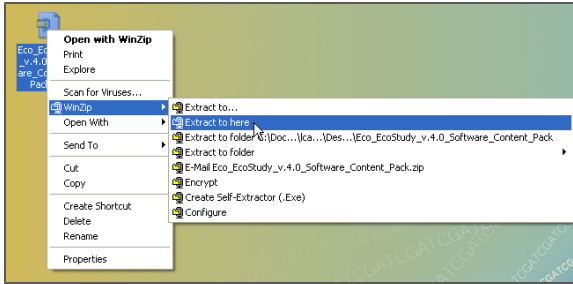
Upgrading the Eco Software

Before starting your software upgrade on the netbook computer:

- ▶ Close all open software applications, including the Eco software.
- ▶ Make sure the power cables and Ethernet cables are properly connected.
- ▶ Make sure the Eco instrument is turned on.

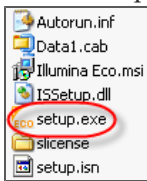
Steps to Upgrade your Eco Software and Firmware

- 1 Right-click the Eco_EcoStudy_v.4.0_Software_Content_Pack.zip file and select **WinZip | Extract to here.**

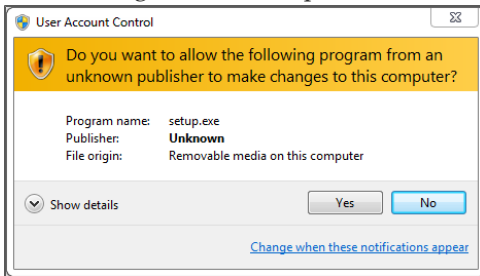


- 2 Open the Eco_EcoStudy_v.4.0_Software_Content_Pack\Eco_v.4.0 subfolder.
- 3 Right-click the V4.0.07_Eco.zip file and select **WinZip | Extract to here.**
- 4 Double-click **setup.exe.**

It could take up to one minute for the setup program to launch. Please refrain from attempting to launch the setup program multiple times.



- 5 Select **Yes** when the User Account Control dialog box prompts for permission to make changes to the computer.



- 6 Follow the prompts in the software installation wizard to install the latest Eco software onto the netbook.



NOTE

If the .NET Framework 4.0 Full version software is not already installed on the netbook, the v4.0 upgrade could take as long as 20 minutes.

- 7 When the installation is complete, double-click the Eco desktop icon to open the Eco Software v4.0.

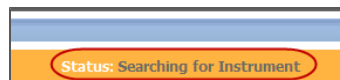
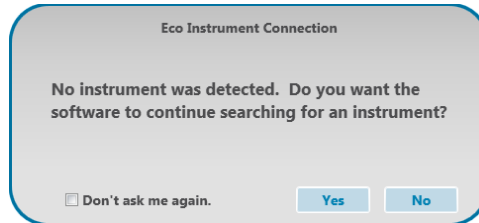


After the upgrade, the Eco Software will need to re-establish a connection to the instrument.

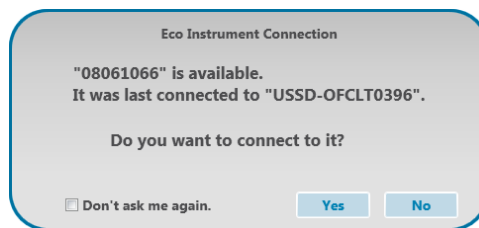
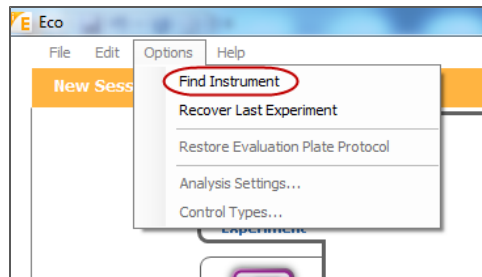


NOTE

The software might not be able to auto-connect the first time you start the software after the v4.0 upgrade. If a dialog box prompts that the instrument is not found, click **Yes** to find the instrument. The status bar shows "Searching for Instrument".



If the software does not establish a connection within a few minutes, select **Options | Find Instrument** to reconnect to the instrument manually. Once the connection to your Eco instrument is identified, click **Yes** to connect.



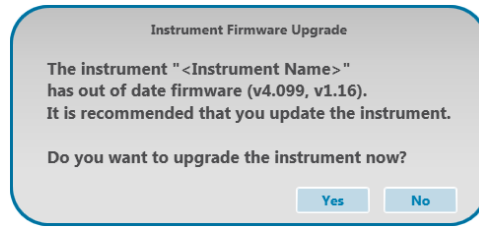
Upon connection, the software will detect whether the instrument firmware also needs to be updated.

- 8 If you are prompted to upgrade the firmware, click **Yes**.

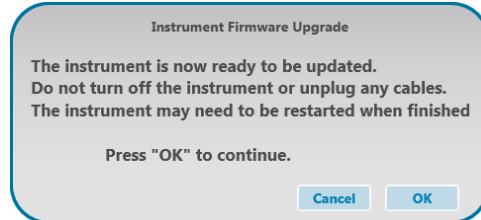


NOTE

The firmware versions detected on your instrument might vary from those shown in this example.



- a Read the instructions in the upgrade dialog box, and then press **OK** to begin the firmware upgrade.

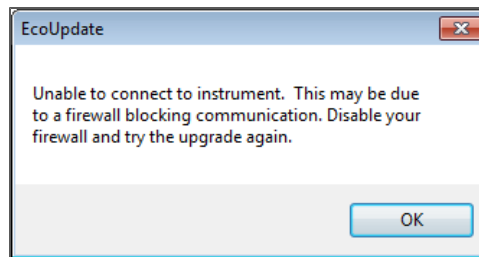


The firmware upgrade could take up to five minutes to complete.



NOTE

The firmware upgrade might require you to temporarily disable the McAfee Firewall. If the following dialog box opens, disable the firewall before continuing.

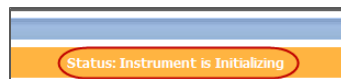


- b When the firmware upgrade is complete, cycle the power on the instrument (turn the instrument off, then back on.)



NOTE

Upon startup, the instrument might automatically begin initializing. This process could take up to 20 minutes to complete.

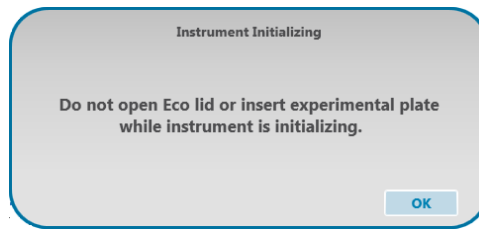


- c Restart the Eco Software by closing the software, and then double-clicking the Eco icon on the netbook desktop. A connection to the instrument should be re-established automatically. If the software fails to auto-connect, follow the instructions in step 7 of this protocol to manually establish the connection.



NOTE

If the status bar shows "Instrument is Initializing", a dialog box opens, warning not to insert your plate until after initialization has completed. This process could take up to 20 minutes to complete.



- 9 When the status bar shows "Instrument Ready", select **Help | About Eco/License Information** and check to make sure the software and firmware upgraded properly.

The software should be **4.0.07** and the firmware should be **4.109.7; mcFW 1.28**. (The mcFW number should be followed by a letter, varying by instrument.)



NOTE

If the upgrade did not work properly, cycle the power on the instrument and then retry this installation procedure.

- 10 If you had to disable your firewall in step 8, you can reactivate the firewall now.

Upgrading Your Templates to be v4.0 Compatible

After upgrading your software and firmware, you must upgrade any templates you have saved on your system. If you do not upgrade your templates, the data generated using those templates will be incorrect.

To upgrade your templates to be compatible with the Eco v4.0 Software, you will need to re-open an experiment that was run with the desired template and then save it as a template, overwriting the previous version. Complete the following steps only after having completed the software and firmware upgrades.



NOTE

You cannot open and resave the template itself to convert your templates. The template must be recreated from an actual run file.

- 1 Using Eco v4.0, re-open a saved experiment that was run with the desired template.
- 2 Select **File | Save As Template**.
- 3 In the Save As dialog box, enter a name for the template.
To replace the original template, use the same name as the original.
- 4 If you assigned a different name than the original for the v4.0-compatible template, delete the previous version from the templates list.

Notes

Technical Assistance

For technical assistance, go to <http://www.illumina.com/qpcr>.

MSDSs

Material safety data sheets (MSDSs) are available on the Illumina website at <http://www.illumina.com/msds>.

Product Documentation

If you require additional product documentation, you can obtain PDFs from the Illumina website. Go to <http://www.illumina.com/support/documentation.ilmn>.

When you click on a link, you will be asked to log in to My Illumina. After you log in, you can view or save the PDF. To register for a My Illumina account, please visit <https://my.illumina.com/Account/Register>.

Illumina

Headquartered in San Diego, California, U.S.A.

+1.800.809.ILMN (4566)

+1.858.202.4566 (outside North America)

techsupport@illumina.com

www.illumina.com