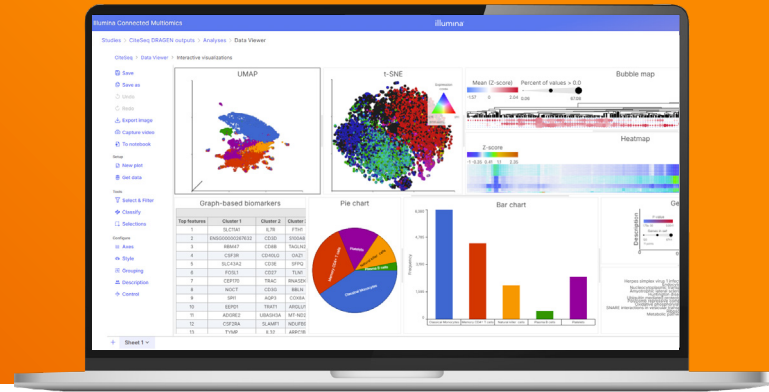




Accelerate your single cell studies

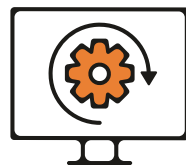
with Illumina Connected Multiomics



Illumina Connected Multiomics enables researchers of all skill levels to intuitively analyze large and complex single-cell data at scale and combine with other omic data and modalities for new discoveries. Optimized for the [Illumina Single Cell 3' RNA Prep kit](#) and integrated with a custom [DRAGEN Single Cell pipeline](#), the streamlined analyses workflow allows you to accurately map and align up to one million samples, perform cell classification, build data visualizations, and interpret biological findings.



Unlock deeper biological insights

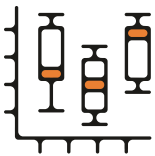


Streamline analysis with intuitive software



Scale your studies with ease

Confidently analyze multiomic data



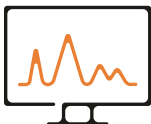
Interactive visualizations

Illustrate cell clusters and classification, differential expression, cell trajectory, cell-to-cell communication, and pathways with information rich and publication ready visualizations



Data Integration

Curate comprehensive studies by aggregating and annotating sample data with phenotypic metadata



Multimodal and multiomic analysis

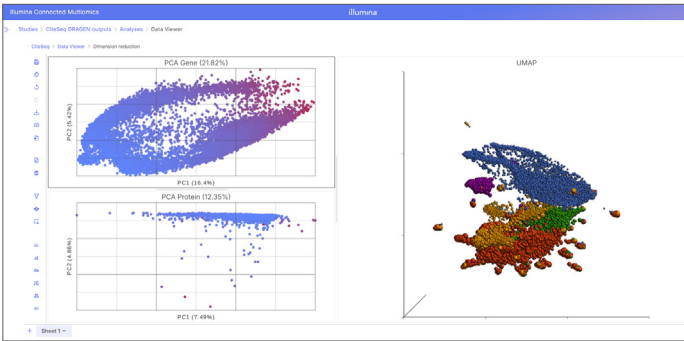
Analyze data from multiple single-cell RNA prep kits simultaneously with state-of-the-art methods and visualizations



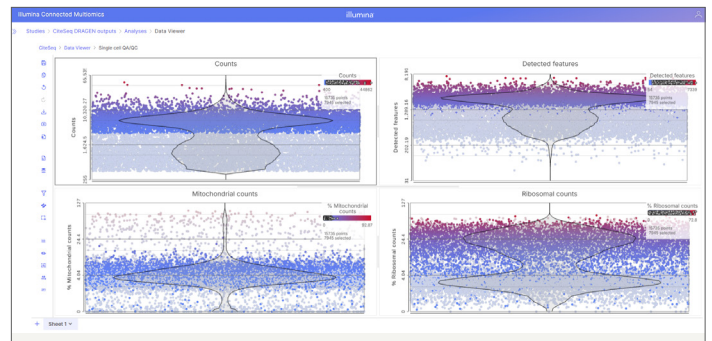
Security-first infrastructure

Protect the privacy of your multiomic data with industry-leading global and local security standards

Bring your single-cell studies to life in beautiful, interactive visualizations

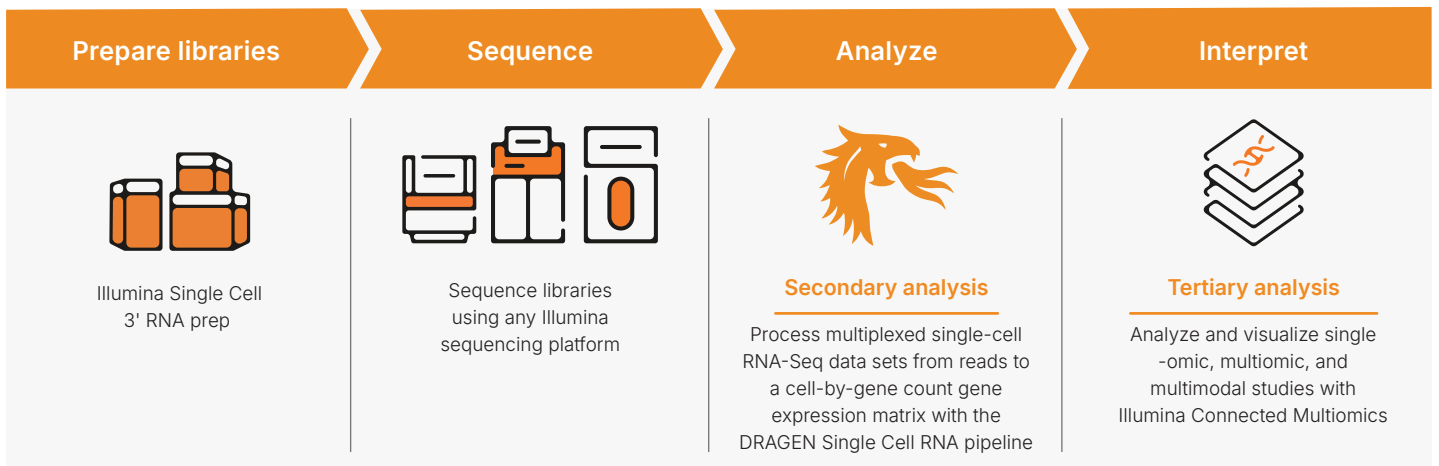


Simultaneously explore multiple modalities within single cell datasets through 2D and 3D PCA plots, with options to isolate or integrate cells for a more comprehensive analysis.



Perform cell-level QC interactively and filter cells based on UMI count, detected genes, mitochondrial and ribosomal counts.

An easy-to-use workflow that integrates Illumina Single Cell 3' RNA Prep, sequencer, and data analysis, taking your single cell studies from sample preparation to insights.



What you can do:

- ✓ Dimensionality
- ✓ Clustering & classification
- ✓ Differential analysis
- ✓ Biological interpretation

800.809.4566 toll-free (US) | +1.858.202.4566 tel
 techsupport@illumina.com | www.illumina.com



Learn more



Request demo

For Research Use Only. Not for use in diagnostic procedures.

2025 Illumina, Inc. All rights reserved. All trademarks are the property of Illumina, Inc. or their respective owners. For specific trademark information, see www.illumina.com/company/legal.html. M-GL-03511

